



NOMAD



Products benefits:

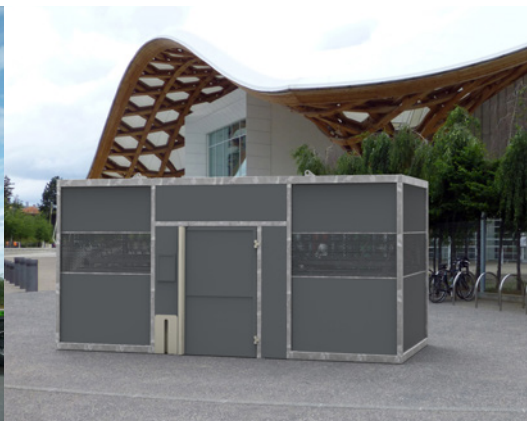
- Ready-to-be-installed-bike-shelter
- Modern design
- Module: pre-equipped with '2 park up' cycle racks

Options:

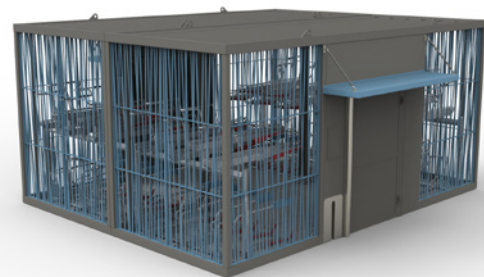
- Customized stickers and claddings
- Specific colours
- Equipments: access control, canopy, bicycle pump...



Crane handling

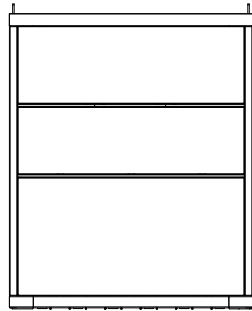
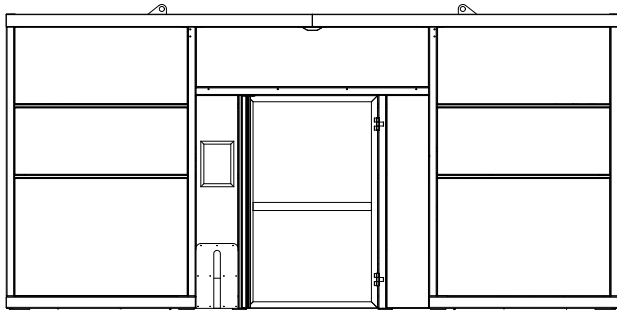


NOMAD - standard version

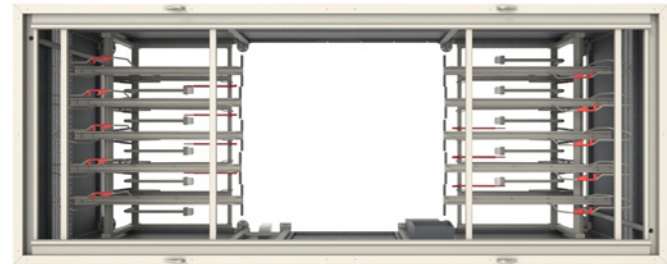
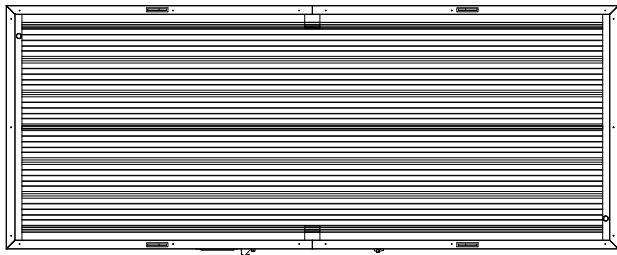


NOMAD - 2 modules version

TECHNICAL DATA SHEET



Frame and cycle racks



View from the inside



20 bikes per module

Simple shelter

Width: 2.40m

Length: 6.04m

Height: 2.91m

NOMAD

cycles - motorcycles

Cycle racks included - Civil engineering costs borne by client

5 years, parts and labour guarantee, excluding vandalism, accident or storm (wind > 130 km/h)

CONSTRUCTION

- Galvanised steel tube frame
- 80 x 80 x 3 mm posts
- Steel tube high and low cross members (120 x 80 x 4 mm)
- Gutters collecting rainwater in the posts
- Roof cross members in square tube (60 x 60 x 3 mm)
- Adjustable feet on plates
- Stainless steel class A2 assembly fastenings
- Modularity: up to 4 modules (from 20 to 80 bikes)

ROOF

- HACIERBA 3.333.39 T steel deck roof, painted on the outer face

FINISH

- Heat cured polyester paint baked at 200°C, insensitive to UV
- Upon request: choice of colours from the RAL range

CLADDING

- Upon request: metal plate and/or perforated sheet, laser cutting metal sheet, random metal railing
- Upon request: stickers.

FIXINGS

- Chemical resin fixing (HIT-HY200A) with threaded rods (HIT-V(8,8)M12) on concrete blocks.

Other dimensions possible.
For customised quotations and design,
contact our sales department:

Tel : +332 40 32 51 60

Groupe ABRI PLUS

31 rue de l'industrie
44310 St Philbert de Grand Lieu
FRANCE