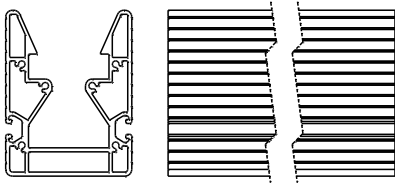




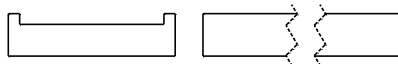
## Manual/Handleiding/Handbuch/Manuel/Manual

# 1

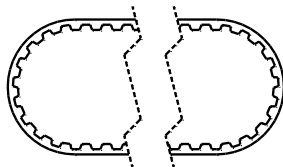
A. Extrusion profile



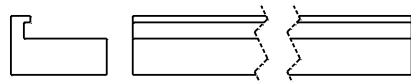
B. Plastic guidance (green)



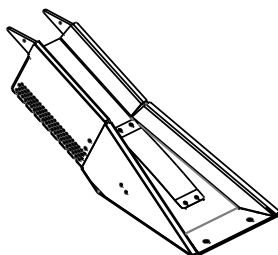
C. Conveyor belt



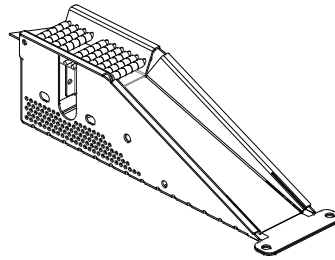
D. Plastic guidance half (green)



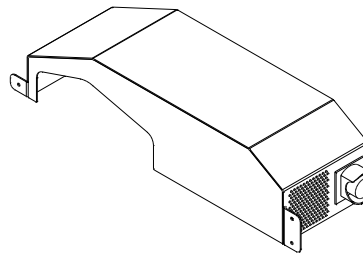
E. Entrance



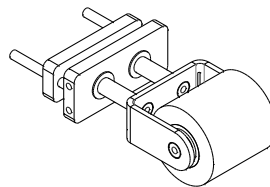
F. Exit



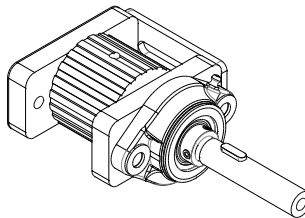
G. Motor cover



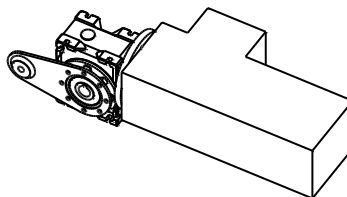
H. Pulley



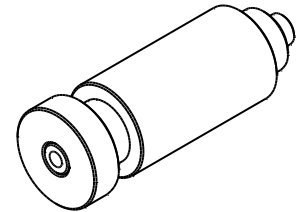
I. Drivepulley



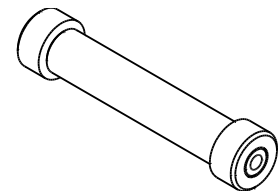
J. Motor



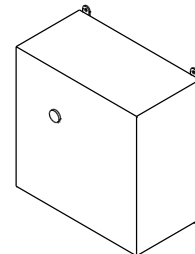
K. Belt guidance big



L. Belt guidance small



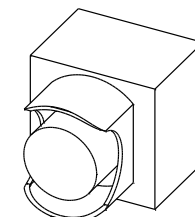
M. Control box



N. Sensor

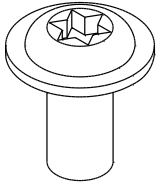


O. Emergency button

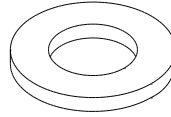




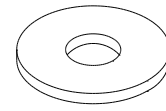
a. Bolt M6x12



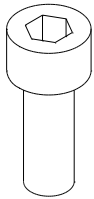
g. Washer M10



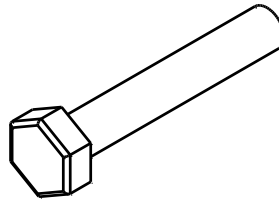
m. Washer M5



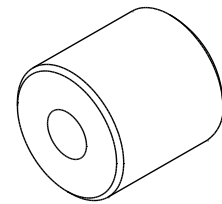
b. Allen bolt



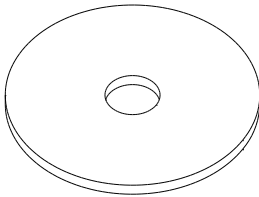
h. Bolt M10x60



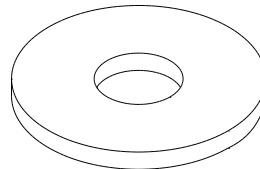
n. Separator



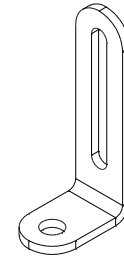
c. Washer M6 Big



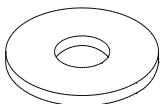
i. Big washer M10



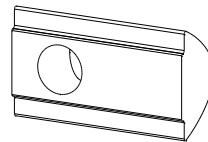
o. Bracket



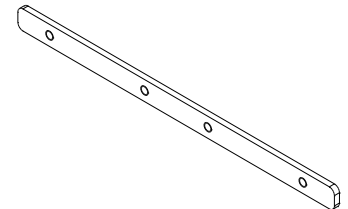
d. Washer M6



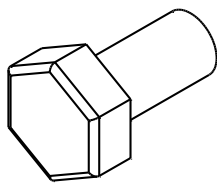
j. T-nut



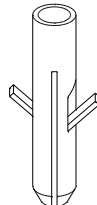
p. Connector strip



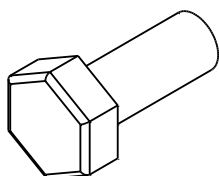
e. Bolt M10x20



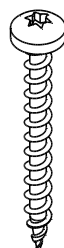
k. Plug



f. Bolt M10x25

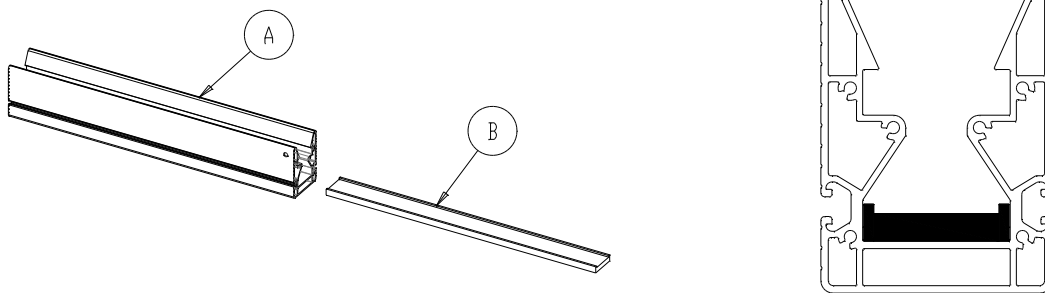


l. Screw



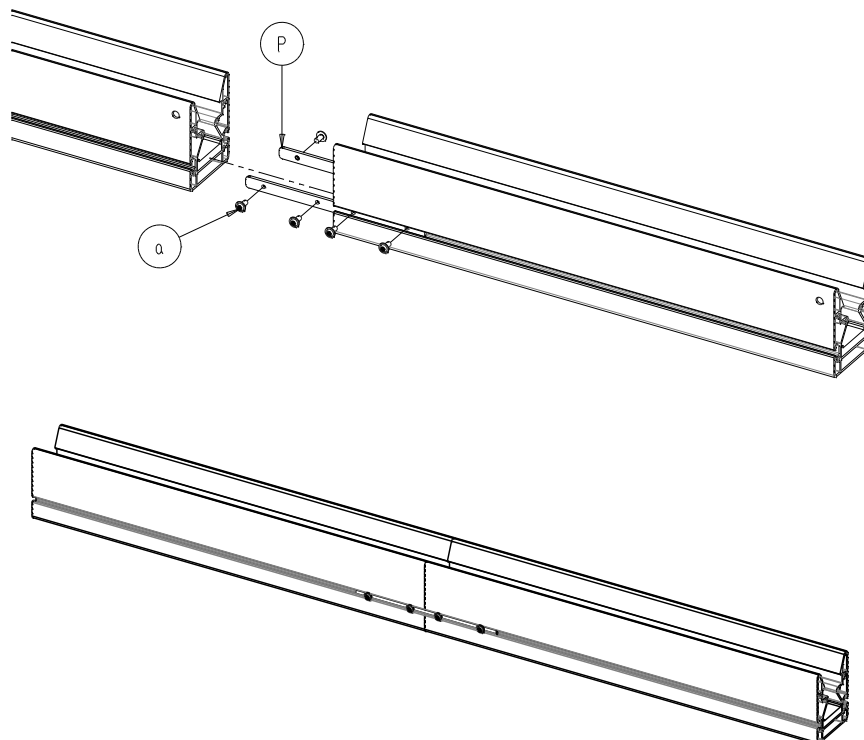
## 2 Mounting plastic guidance in extrusion profile

1x A.  
1x B.



## 3 Mounting extrusion profile

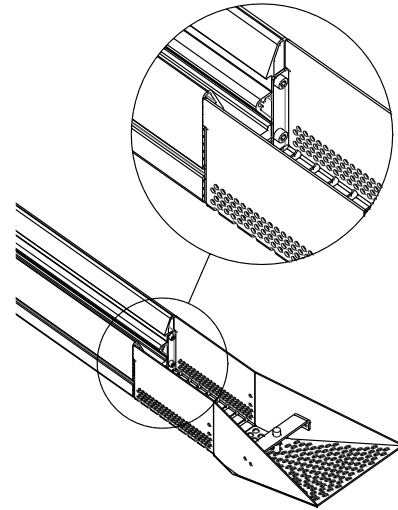
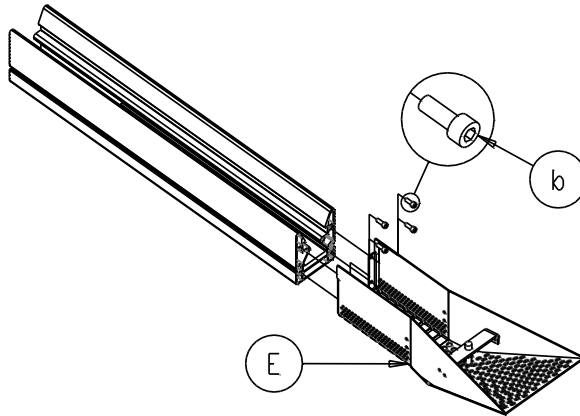
2x p.  
8x a.





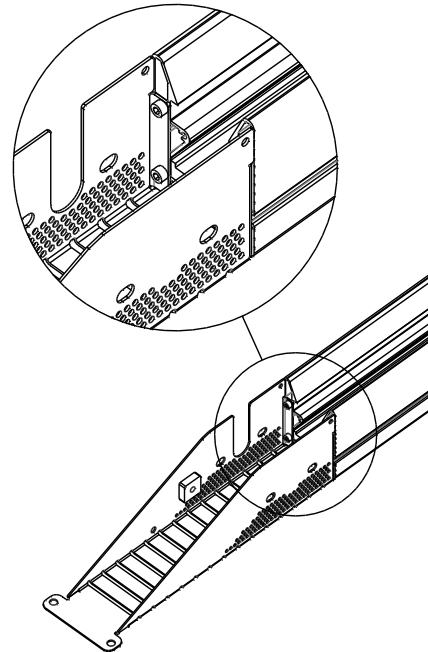
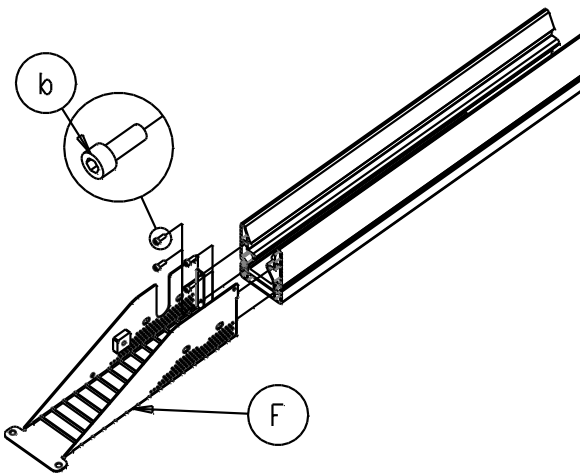
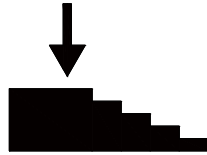
## 4 Mounting – Entrance (down)

4x b.  
1x E.



## 5 Mounting – Exit (Up)

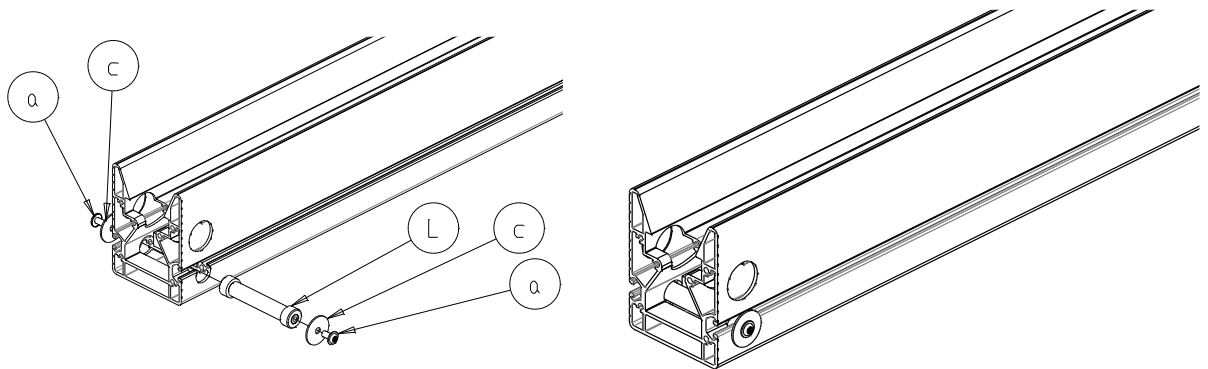
4x b.  
1x F.





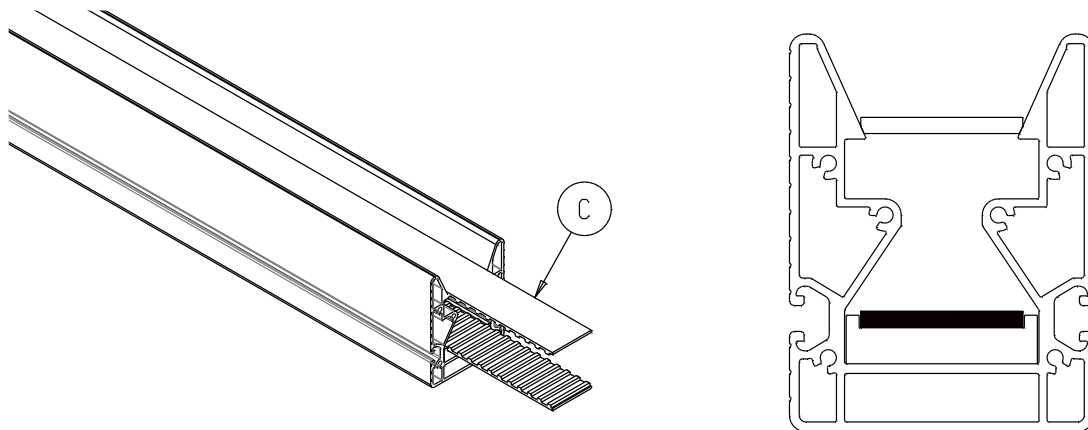
## 6 Mounting – Belt guidance small

1x L.  
2x a.  
2x c.



## 7 Mounting – Conveyor belt (step 1)

1x C.



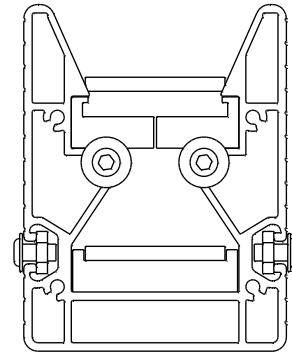
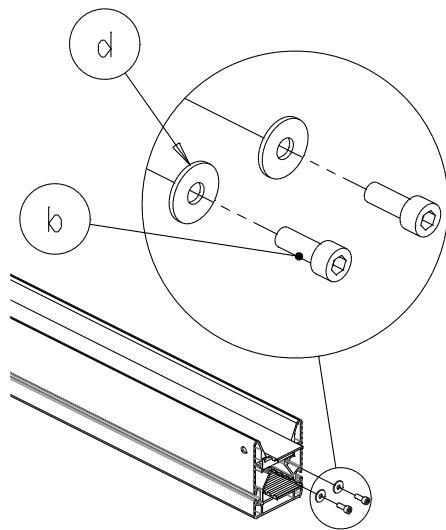
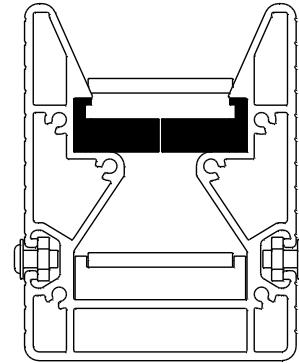
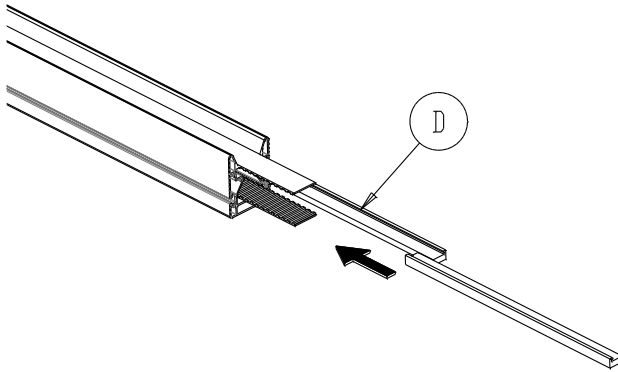
**!** Push the belt into the plastic guidance.

**!** Leave the upper side loose.



## 8 Mounting – Plastic guidance half

- 1x D.
- 2x b.
- 2x d.

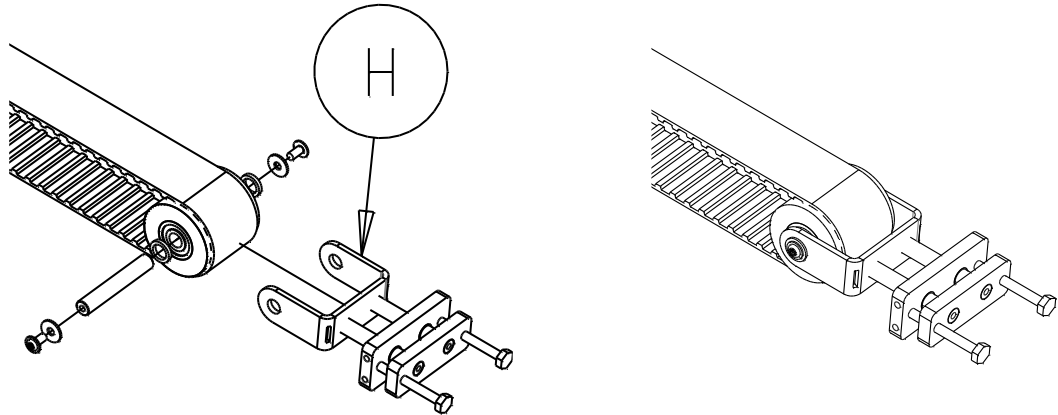




**9**

1x H.

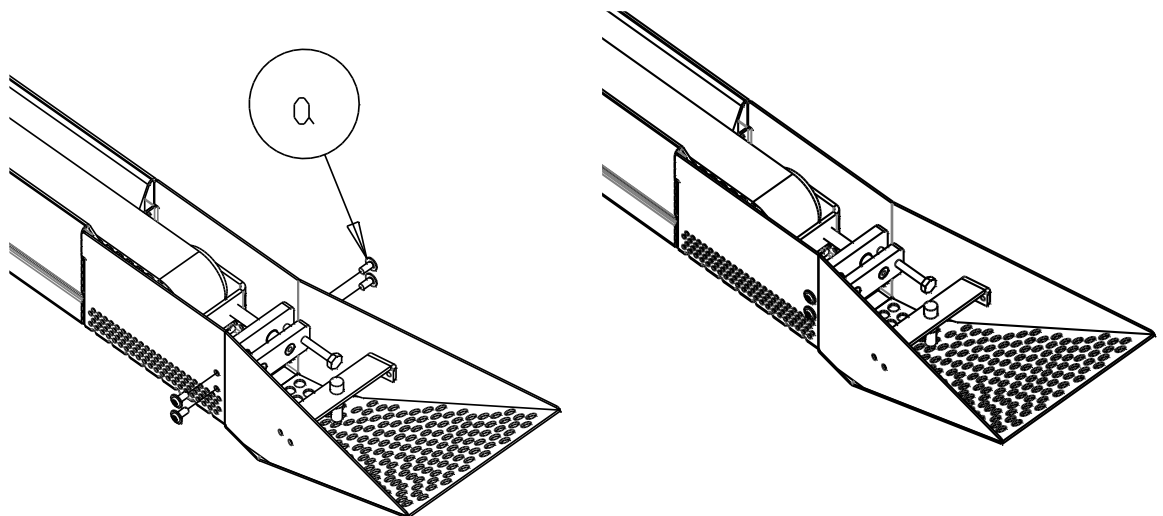
## Mounting – Pulley (step 1)



**10**

4x a.

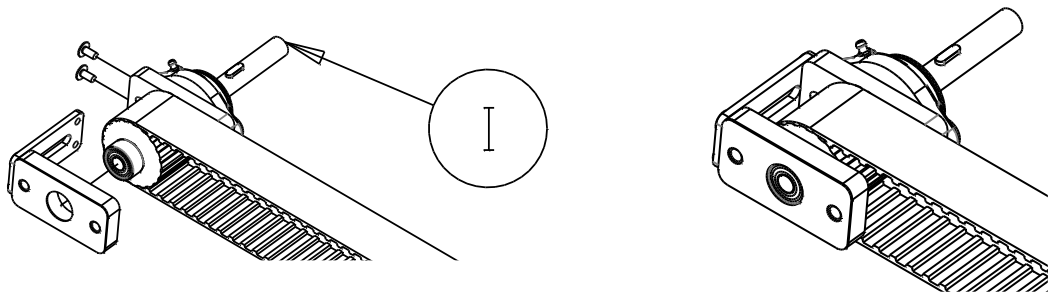
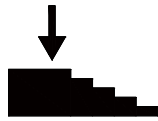
## Mounting – Pulley (step 2)





## 11 Mounting – Drive pulley (step 1)

1x I.

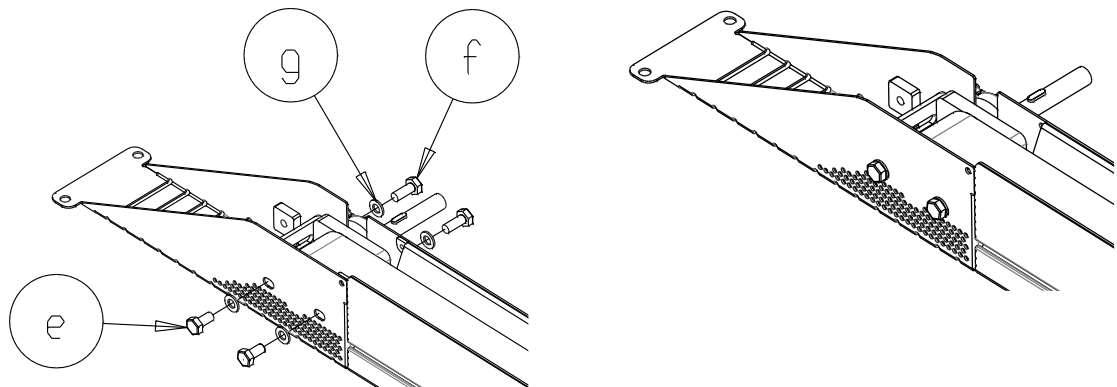


## 12 Mounting – Drive pulley (step 2)

2x e.

2x f.

4x g.

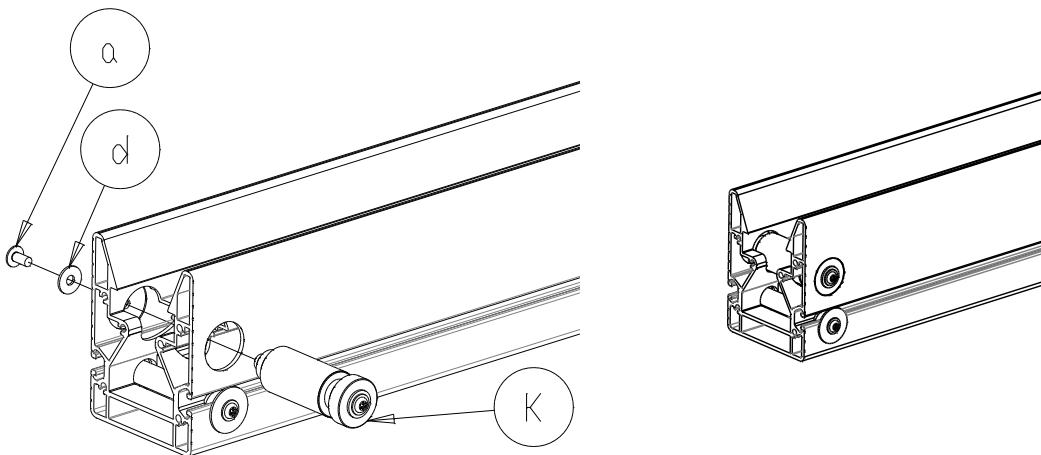






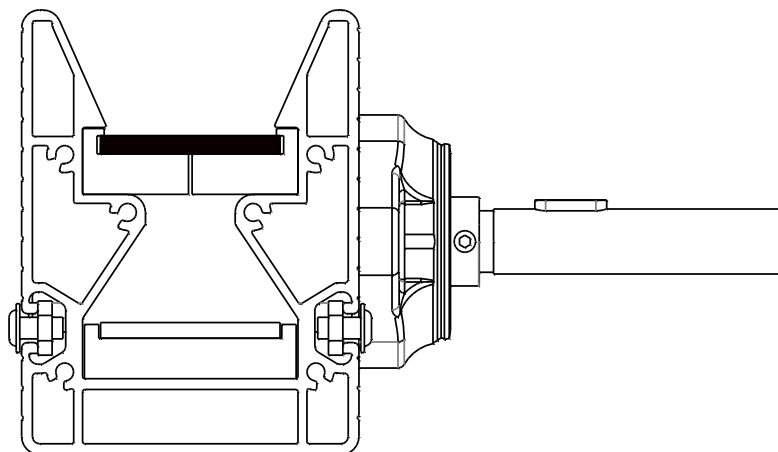
## 13 Mounting – Belt guidance big

- 1x K.
- 1x a.
- 1x d.



## 14 Mounting – Conveyor belt (step 2)

- 1x C.



Push the conveyor into the Plastic guidance half

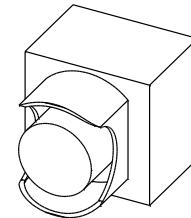


## 15 Connect all electrics

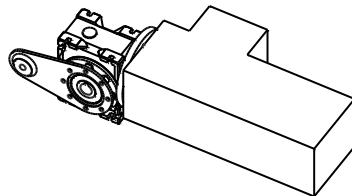
- 1x G.
- 1x M.
- 1x N.
- 1x O.



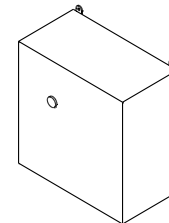
Sensor



Stop/emergency button



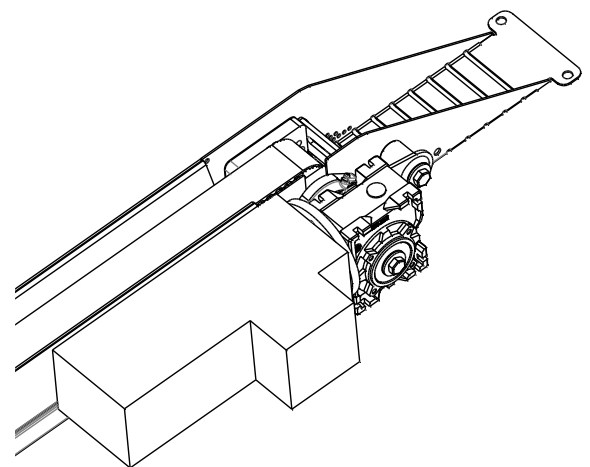
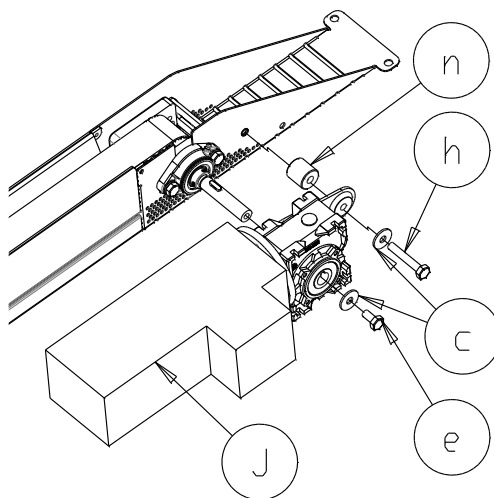
Motor



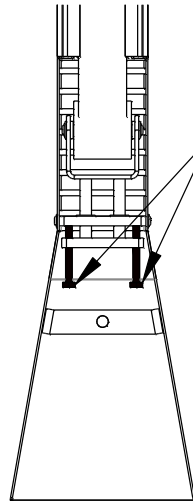
Control box

## 16 Mounting - Motor

- 1x J.
- 2x c.
- 1x e.
- 1x h.
- 1x n.



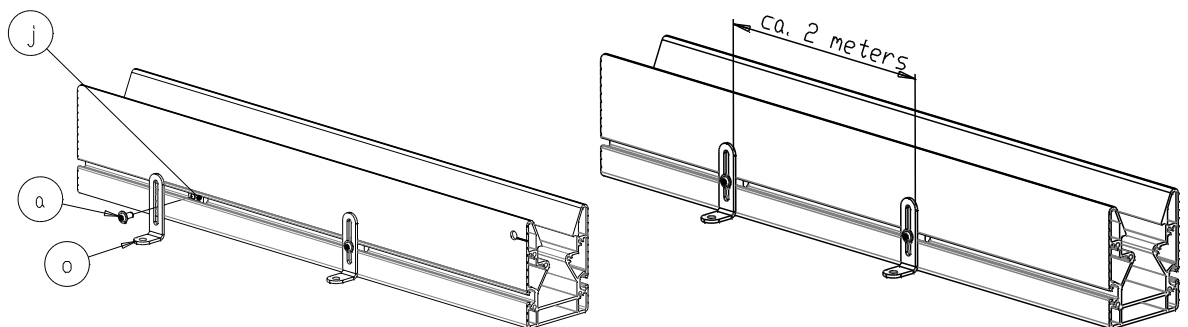
## 17 Tensioning the belt



Turn bolts to tension and adjust the conveyor belt

## 18 Mounting – extrusion profile to the ground

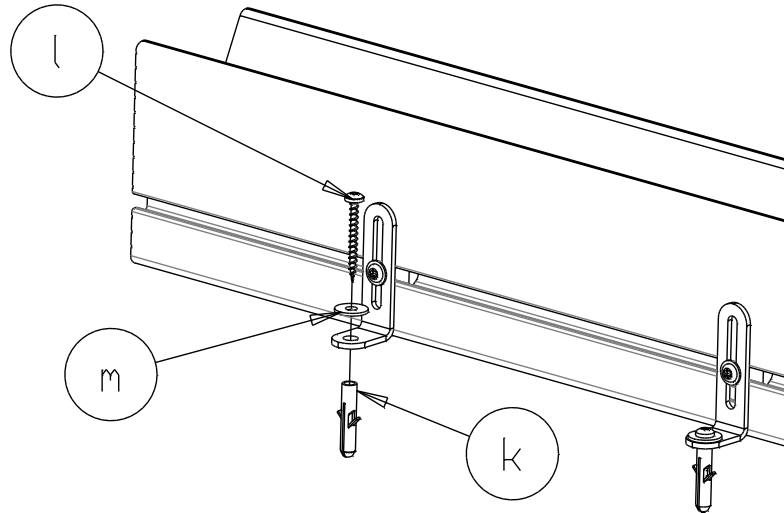
- 1x a.
- 1x j.
- 1x o.





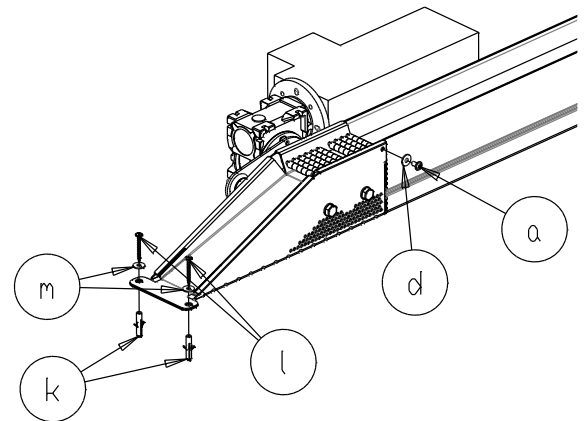
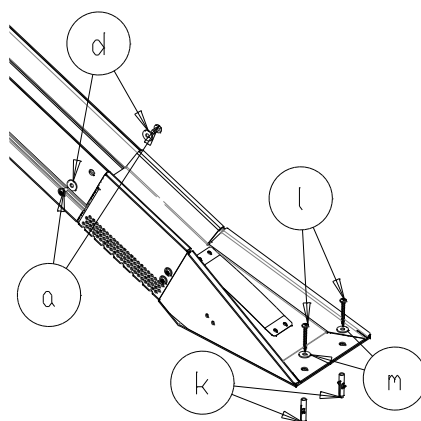
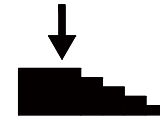
## 19 Mounting – extrusion profile to the ground

- 1x k.
- 1x l.
- 1x m.



## 20 Mounting – Covers on entrance and exit

- 3x a.
- 3x d.
- 4x k.
- 4x l.
- 4x m.





## 21 Mounting – Motor cover

1x G.  
3x a.

